



Streaming Explorer V2.0.02

User Guide

Table of Contents

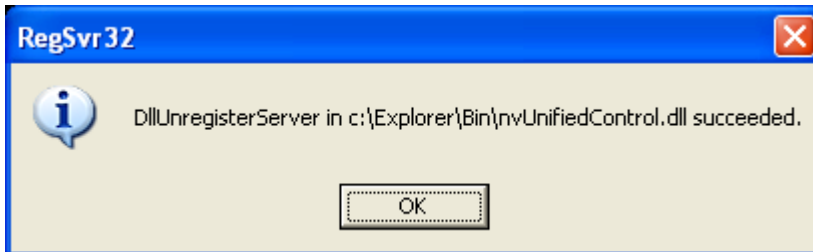
INSTALLATION	2
CONNECTION.....	3
Step 1: Open “Explorer.htm”	3
Step 2: Connection.....	5
Step 3: Disconnection.....	6
PTZ FUNCTION.....	7
Step 1 : Enable PTZ.....	7
Step 2 : Disable PTZ.....	9
Step 3: Pan / Tilt Function Setup	10
Step 4: Zoom / Iris / Focus Function Setup.....	11
Step 5: OSD Function Setup.....	12
Step 6: Preset Function Setup.....	13
Step 7: DI / DO Function Setup.....	14
Step 8: Others Key Setup	15
MOUSE PTZ FUNCTION	16
Step 1 : Enable Mouse PTZ.....	16
Step 2 : Mouse on preview window do adjust position.....	16
Step 3 : Disable Mouse PTZ.....	17

Installation

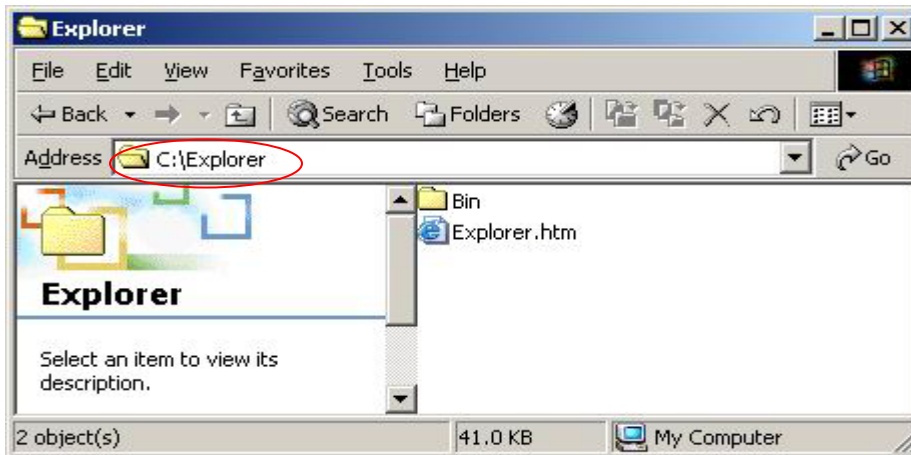
1. Running **setup.bat** in Explorer 2.0.02 folder

DO NOT move SETUP.bat to another place

2. Installation **nvUnifiedControl.dll** succeeded



3. The programs are installed under **C:\Explorer**



Connection

After installation , you can copy “Explorer.htm” to Desktop to use

Step 1: Open “Explorer.htm”

The image shows two windows from a software interface. The top window is titled "Connection" and contains several input fields with red circles and numbers 2 through 13 pointing to them. The fields are: Server IP (172.16.1.61), Multicast IP (empty), User Name (Admin), Password (masked with dots), Http Port (80), Register Port (6000), Control Port (6001), Streaming Port (6002), Multicast Port (5000), Connect TimeOut (1), Socket Size (25.6 KB), and Preview Buffer (3). A "Connect" button is at the bottom. The bottom window is titled "Save Connection Setting" and has a red circle with the number 1 pointing to a dropdown menu labeled "Connection Set" which is currently set to "Lobby". Below it is a "Set Name" field with a dropdown menu showing options: "1 - Lobby", "2 - Lab", and "3 - Parking Lot".

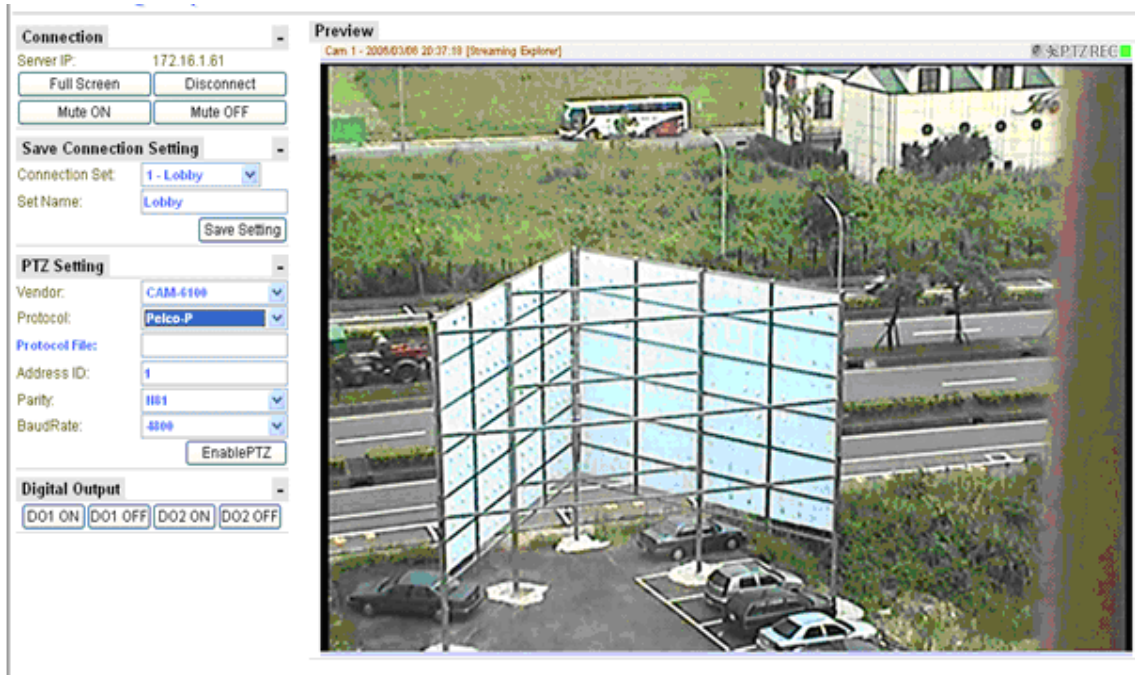
1. **Save Connection Setting:** When select on the connection set listing, it will bring up the original configuration from previous setting, including IP address, Account, Password, Port information and PTZ configuration information.
2. **Server IP Address*:** Connect to the video server with unicast (TCP) connection.
3. **Multicast IP Address:** Subscribe to a multicast network to retrieve video packets.
4. **User Name:** the account to be authorized by the video server.
5. **Password:** the password to be authorized by the video server.
6. **HTTP Port:** the port number for HTTP port on the device
7. **Register Port:** the port number for Registration port on the device
8. **Control Port:** the port number for Control port on the device
9. **Streaming Port:** the port number for Streaming port on the device
10. **Multicast Port:** the port number for Multicast port on the device
11. **Connection Timeout :** set the timeout value to connect the IP device. If we set it to 3 seconds, then, the maximum timeout value is 3 seconds.
12. **Socket Size:** choose the network transport socket size, if your network is very busy or you use the wireless network, you can choose the socket size to let our

software get package to be better performance. When the socket size is small, it will be easier to be operated under unstable bandwidth environment.

13. **Preview Buffer:** choose the video server preview buffer size. Our default is 3 frame.

Step 2: Connection

1. Give Server IP address : Network IP or Internet IP
2. then Press “connect” button
3. you can see the image on the preview window



Step 3: Disconnection

1. If you want to quit preview window
2. press “Disconnect” button

Connection		-
Server IP:	172.16.1.191	
<input type="button" value="Full Screen"/>	<input type="button" value="Disconnect"/>	
<input type="button" value="Mute ON"/>	<input type="button" value="Mute OFF"/>	

PTZ Setting		-
Vendor:	CAM-5130	▼
Protocol:	Kampro	▼
Protocol File:		
Address ID:	1	
Parity:	N81	▼
BaudRate:	4800	▼
		<input type="button" value="EnablePTZ"/>

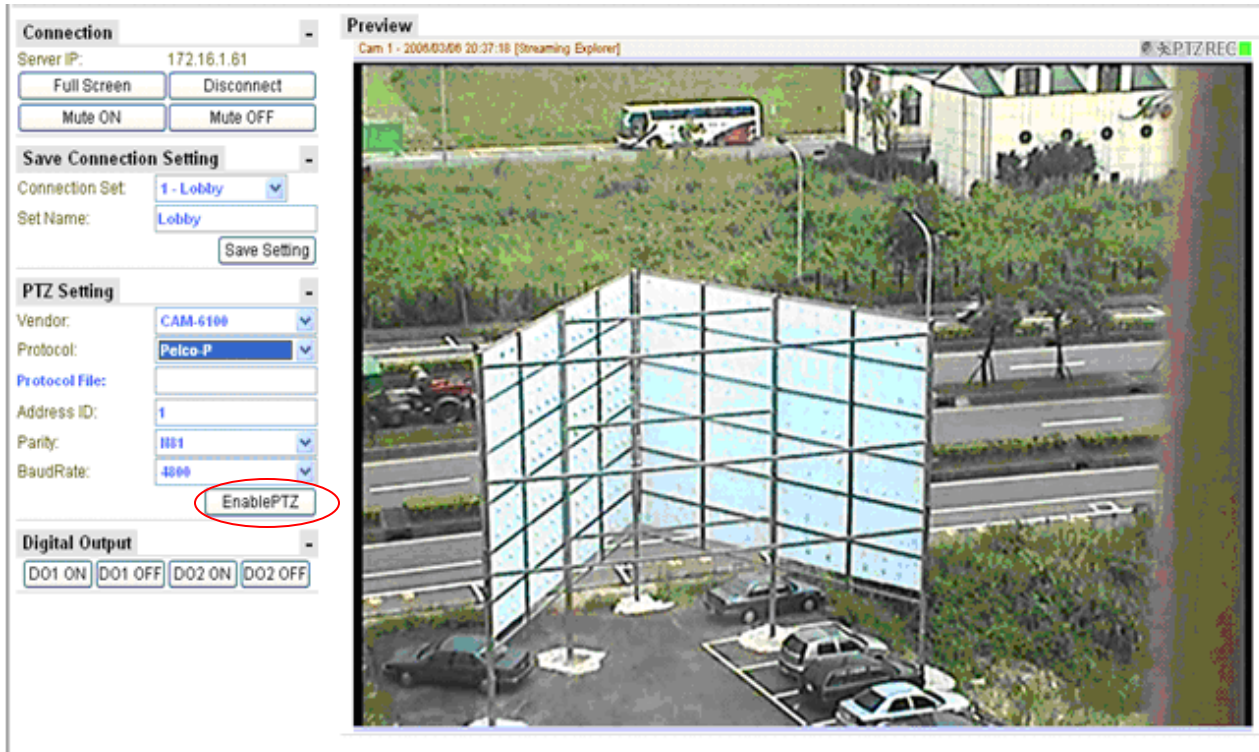
Digital Output				-
<input type="button" value="DO1 ON"/>	<input type="button" value="DO1 OFF"/>	<input type="button" value="DO2 ON"/>	<input type="button" value="DO2 OFF"/>	

Quad					-
<input type="button" value="1"/>	<input type="button" value="2"/>	<input type="button" value="3"/>	<input type="button" value="4"/>	<input type="button" value="Q"/>	

PTZ Function

Step 1 : Enable PTZ

1. Select your IP Speed Dome model **OR** open a Protocol File
2. then open Explorer to connection camera
3. Press “EnablePTZ” button



4. you can see the whole PTZ function key to set.

The screenshot displays a PTZ camera control interface. The left sidebar contains several control panels: 'Connection' (Server IP: 172.16.1.61, Full Screen, Disconnect, Mute ON, Mute OFF), 'Save Connection Setting' (Connection Set: 1 - Lobby, Set Name: Lobby, Save Setting), 'PTZ Setting' (Protocol: CAM-6100, Pelco-D, Setting: N81, 4800, 1, DisablePTZ), 'Digital Output' (DO1 ON, DO1 OFF, DO2 ON, DO2 OFF), 'Pan / Tilt' (Enable Mouse PTZ, Disable Mouse PTZ, directional buttons, Pan Speed, Tilt Speed), 'Zoom / Iris / Focus' (Zoom In, Iris Open, Focus In, Zoom Out, Iris Close, Focus Out, Auto Iris, Auto Focus), 'OSD' (OSD On, Up, OSD Off, Enter, Left, Down, Right, Leave), and 'Preset' (Set and Goto grids, Patrol). The 'Preview' section on the right shows a live video feed of an outdoor parking area with a glass structure, a bus, and a building. A red circle highlights the 'Save Connection Setting' section.

You can also Enter "Set Name", and click on "Save Setting" to save the configuration to system. And when you login next time, you can bring up this configuration easily by choosing the same "Connection Set".

Step 2 : Disable PTZ

1. Press “DisablePTZ” button to end

Connection		-	
Server IP:	192.168.1.134		
Mute ON	Mute OFF	Disconnect	
PTZ Setting		-	
Protocol:	CAM-6200 , Pelco-P		
Setting:	N81 , 9600 , 1		
		DisablePTZ	
Digital Output		-	
D01 On	D01 Off	D02 On	D02 Off

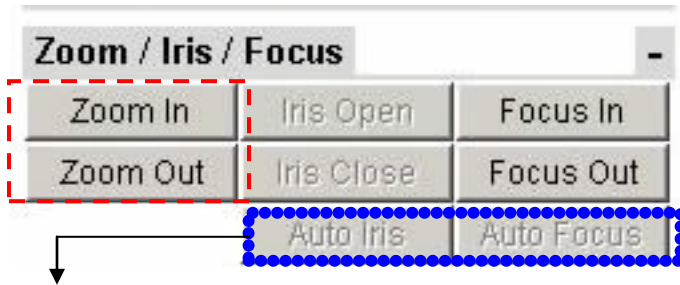
Step 3: Pan / Tilt Function Setup

Pan / Tilt -		
Enable Mouse PTZ	Disable Mouse PTZ	
Up Left	Up	Up Right
Left		Right
Down Left	Down	Down Right
Pan Speed:	3 ▼	Stop
Tilt Speed:	3 ▼	Home
Reset		

1. Pan speed : 1 ~ 5 to adjust
2. Tilt Speed : 1 ~ 5 to adjust
3. Stop button : To some machines cannot auto-stop use.
4. Home button : To some machines have “Home” key function use
5. Reset button : To some machines have “Reset” key function use
6. Direction : Up Left / Up Right / Left / Right / Down Left / Down / Down Right button
Press button to adjust location.

Step 4: Zoom / Iris / Focus Function Setup

1. Zoom Function : Press “Zoom In” /”Zoom Out” button to view
2. IRIS Function : Press “Iris Open” / Iris Close”
3. Focus Function : Press “Focus In” to sharpen the focus on the view
Press “Focus Out” to loosen the focus on the view



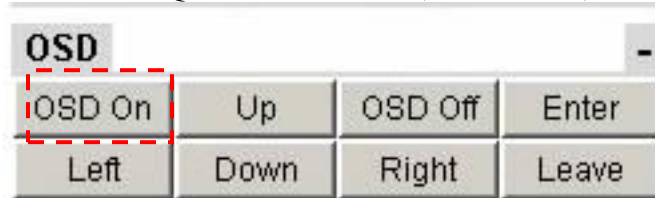
If you see the function key is disable , the meaning is your device doesn't support , you cannot use it.

Step 5: OSD Function Setup



Your speed dome **MUST** has **OSD** function to support .

1. OSD on : To open OSD function via speed dome
2. OSD off : To close OSD function
3. UP / Down / : To select Menu.
4. Left / Right : function mode to setup
5. Enter : into function mode to set up.
6. Leave : According to different the OSD function of speed dome to support.
Quit function mode , Exit Menu , or select items to set .



Step 6: Preset Function Setup

1. Set up indicating current position

To decide your position then click Number 1 - 16 to set

2. Goto current Position

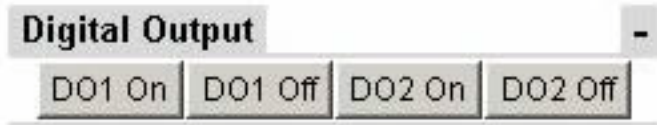
Choosing number 1-16 make sure position

3. Patrol : auto run position

Preset								-
Set	1	2	3	4	5	6	7	8
	9	10	11	12	13	14	15	16
Goto	1	2	3	4	5	6	7	8
	9	10	11	12	13	14	15	16
Patrol								

Step 7: DI / DO Function Setup

1. DO1 On/Off : Set event DO1 trigger
2. DO2 On/Off : Set event DO2 trigger



Step 8: Others Key Setup

1. BLC : Back Light Control

Others		
Day Mode	BLC On	Privacy
Night Mode	BLC Off	

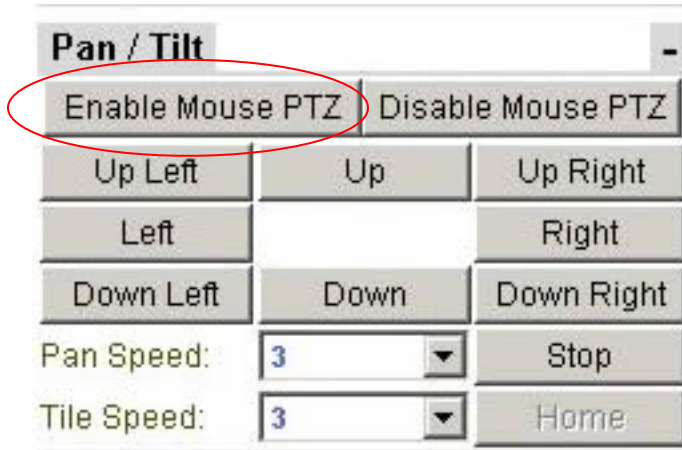
Your Speed dome **MUST** has **BLC** function support .

Mouse PTZ Function

Using **MOUSE** do PTZ any function

Step 1 : Enable Mouse PTZ

1. In **Pan/Tilt** item to click “Enable Mouse PTZ” button



Step 2 : Mouse on preview window do adjust position

1. Mouse move to preview window , can see cursor is showing



2. Moving your cursor do adjust position

3. Cursor Meaning



: Up



: Down



: Left



: Right



: Up Left



: Up Right



: Down Left



: Down Right



: Zoom In



: Zoom Out

Step 3 : Disable Mouse PTZ

Click “Disable Mouse PTZ” Button to stop

Pan / Tilt		-
Enable Mouse PTZ	Disable Mouse PTZ	
Up Left	Up	Up Right
Left		Right
Down Left	Down	Down Right
Pan Speed:	3	Stop
Tilt Speed:	3	Home