



**IP Utility V3.5**  
**User Manual**

# Table of Contents

<i>Getting Started</i> _____	<i>1</i>
<b>Start IP Utility</b> _____	<b>1</b>
<i>IP Utility Listing User Interface</i> _____	<i>2</i>
<b>Understating the User Interface</b> _____	<b>2</b>
<b>Server Information</b> _____	<b>1</b>
<b>Server Detail Information</b> _____	<b>2</b>
<b>The Page of Server Detail Information</b> _____	<b>2</b>
<b>Edit</b> _____	<b>1</b>
<b>Edit Details</b> _____	<b>2</b>
<i>Firmware Upgrade User Interface</i> _____	<i>1</i>
<b>Understating the User Interface</b> _____	<b>1</b>
<b>The Page of Firmware Upgrade Setting</b> _____	<b>2</b>
<i>IP Utility Backup and Restore</i> _____	<i>3</i>
<b>Backup</b> _____	<b>3</b>
<b>Restore</b> _____	<b>1</b>

# 1 Getting Started

## Start IP Utility

To start IP Utility, double-click the “IP Utility” icon on the desktop.



After double-click “IP Utility”, you will see the page.

It's searching device.



Figure 1. IP Utility

# 2

## IP Utility Listing User Interface

IP Utility is designed with a user-friendly interface, and deployed with minimal training.

### Understating the User Interface

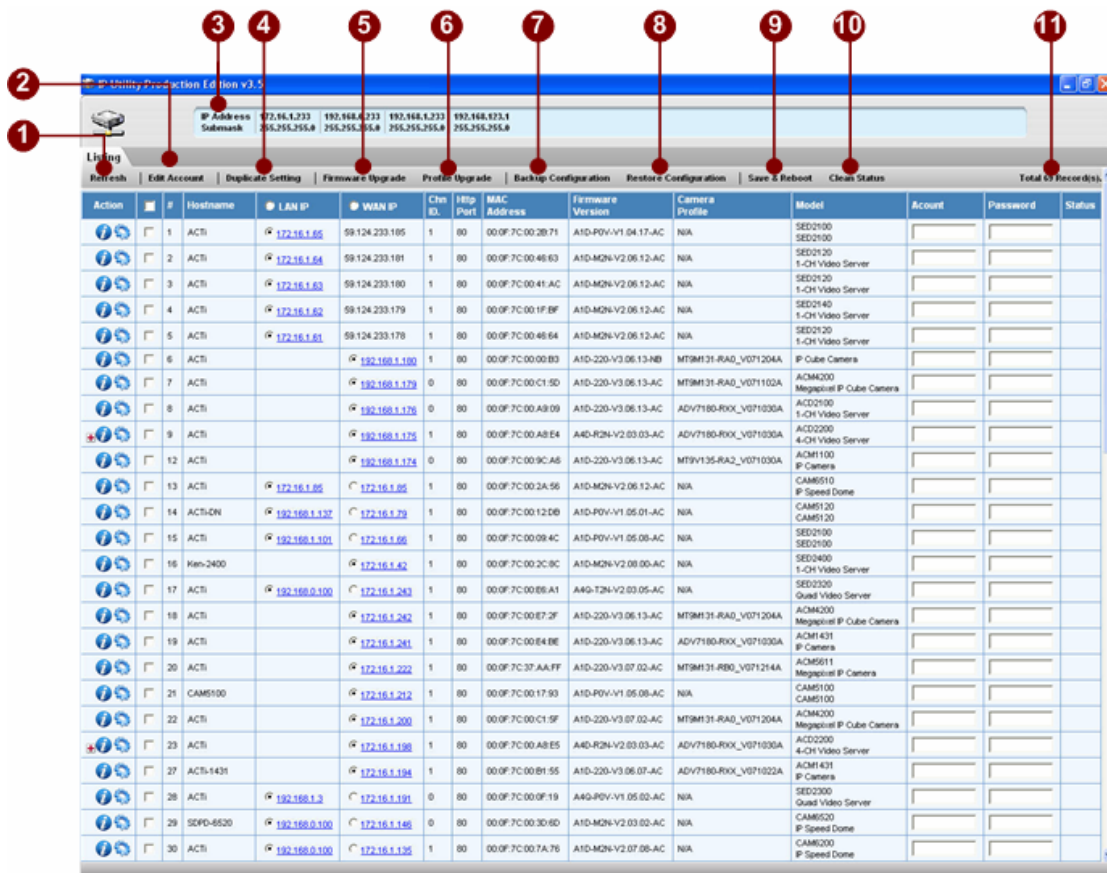


Figure 2. IP Utility Listing User Interface

1. **Refresh:** Refresh this page and search available servers again.
2. **Edit Account:** Display a page to set account and password, and fill setting of selected connections with those data be used to login servers.
3. **IP Address Information:** Display a page to set account and password, and fill setting of selected connections with those data be used to login servers.
4. **Duplicate Setting:** Click this button to let “Hostname” “LAN IP” “WAN IP” of selected connections to be changeable.

5. **Firmware Upgrade:** Update all setting of selected connections, and servers will reboot after several minutes.
6. **Profile Upgrade:** Update profile to device automatically and reboot after upgrade completely.
7. **Backup Configuration:** Duplicate data to selected connections.
8. **Restore Configuration:** Duplicate data to selected connections.
9. **Save and Reboot:** Select all or cancel all selected connections.
10. **Clean Status:** Clean now status
11. **Total search listing:** All connections are connected by LAN IP

# Server Information












Action	#	Hostname	LAN IP	WAN IP	Chan ID	Http Port	MAC Address	Firmware Version	Camera Profile	Model	Account	Password	Status
	1	ACTI		172.16.1.109	1	80	00:0F:7C:00:03:01	A1D-220-V3.06.13-AC	MT9V135- RB2_V071219A				
	2	ACTI		172.16.1.111	1	80	00:0F:7C:00:00:12	A1D-310-V4.00.00-AC	N/A	SOC8180 SOC8180			
	3	SEPD-4100		172.16.1.113	1	80	00:0F:7C:00:0C:27	A1D-220-V3.08.00-AC	MT9V135- RC2_V071108A	ACM1100 IP Cube Camera			
	4	SEPD-1311N		172.16.1.115	1	80	00:0F:7C:00:C2:4A	A1D-220-V3.06.13-AC	ADV7180- R0X_V071030A	ACM1311 IP Camera	Admin	*****	Uploading Profile...
	5	ACTI		172.16.1.117	1	80	00:0F:7C:FF:11:11	A1D-220-V3.06.13-AC	MT9M131- RA0_V071204A	ACM1110 IP Camera			
	6	ACTI		172.16.1.121	1	81	00:0F:7C:00:A9:00	A1D-220-V3.06.13-AC	Request system info failed	ACD2100 1-CH Video Server			
	7	ACTI		172.16.1.131	1	88	99:8F:7C:88:81:84	A1D-220-V3.06.13-AC	MT9V135- RB2_V071219A	ACM1100 IP Camera	Admin	*****	Uploading Profile...
	8	ACTI-1431		172.16.1.136	1	80	00:0F:7C:00:81:55	A1D-220-V3.06.07-AC	ADV7180- R0X_V071022A	ACM1431 IP Camera			
	9	ACTI		172.16.1.138	1	80	00:0F:7C:00:A8:E5	A4D-R2N-V2.03.03-AC	ADV7180- R0X_V071030A	ACD2200 4-CH Video Server			
	13	ACTI		172.16.1.200	1	80	00:0F:7C:00:C1:5F	A1D-220-V3.07.02-AC	MT9M131- RA0_V071204A	ACM4200 Megapixel IP Cube Camera			
	14	CAM5100		172.16.1.212	1	80	00:0F:7C:00:17:93	A1D-P0V-V1.05.08-AC	N/A	CAM5100 CAM5100			
	15	ACTI		172.16.1.222	1	80	00:0F:7C:37:AA:FF	A1D-220-V3.07.02-AC	MT9M131- R0X_V071214A	ACM5611 Megapixel IP Camera			
	16	ACTI		172.16.1.281	1	80	00:0F:7C:00:84:BE	A1D-220-V3.06.13-AC	ADV7180- R0X_V071030A	ACM1431 IP Camera			
	17	ACTI		172.16.1.282	1	80	00:0F:7C:00:E7:2F	A1D-220-V3.06.13-AC	MT9M131- RA0_V071204A	ACM4200 Megapixel IP Cube Camera			
	18	Ken-2400		172.16.1.42	1	80	00:0F:7C:00:2C:9C	A1D-M0N-V2.08.00-AC	N/A	SED2400 1-CH Video Server			

Figure 3. Server Information

1. **Action:**
2. **Hostname:**



**NOTE:** Before connecting a server, make sure you have chosen the correct type of IP for your device.

3. **LANIP**
4. **WANIP:**
5. **Channel:**
6. **Http Port:**
7. **Mac Address:**
8. **Firmware Version:**
9. **Camera Profile Version:**
10. **Model:**
11. **Account**
12. **Password**
13. **Status**

# Server Detail Information

Action	#	Hostname	LAN IP	WAN IP	Chn ID	Http Port	MAC Address	Firmware Version	Model	Account	Password	Status
	1	ACT1	192.168.1.201		0	80	00:0F:7C:00:13:E1	B1D-AQ-V1.03.04-AC	SED2000 1-CH Video Transcoder	<input type="text"/>	<input type="text"/>	
	2	CAMS100	<a href="#">172.16.1.252</a>		1	80	00:0F:7C:00:17:93	A1D-P0V-V1.05.08-AC	CAMS100 1-CH IP Camera	<input type="text"/>	<input type="text"/>	
	3	ACT1	<a href="#">172.16.1.191</a>	10.0.0.1	0	80	00:0F:7C:00:0F:19	A4Q-P0V-V1.04.02-AC	SED2000 1-CH Quad	<input type="text"/>	<input type="text"/>	
	4	2100-217	<a href="#">172.16.1.257</a>	10.0.0.1	1	80	00:0F:7C:00:00:00	A1D-P0V-V1.05.08-AC	CAMS100 1-CH IP	<input type="text"/>	<input type="text"/>	

Figure 4. Server detail information

1. Check the checkbox
2. Type account and password
3. Click check detail icon.

# The Page of Server Detail Information

LAN IP	172.16.1.191
Firmware Version	A4Q-P0V-V1.04.02-AC
MAC Address	00:0F:7C:77:7A:CC
Factory Default Type	NTSC, Svideo, No Audio (0x12)
SYSTEM	Embedded system
TYPE	Encoder
NO OF CHANNEL	1 channel
MULTIPLEXING	No multiplexing
NO OF AUDIO WAYS	No Audio
VIDEO FPS	Constant
VIDEO RESOLUTION	N720x480
VIDEO BITRATE	1.2M

Figure 5. The Page of Server detail Information

## Page of Edit Account

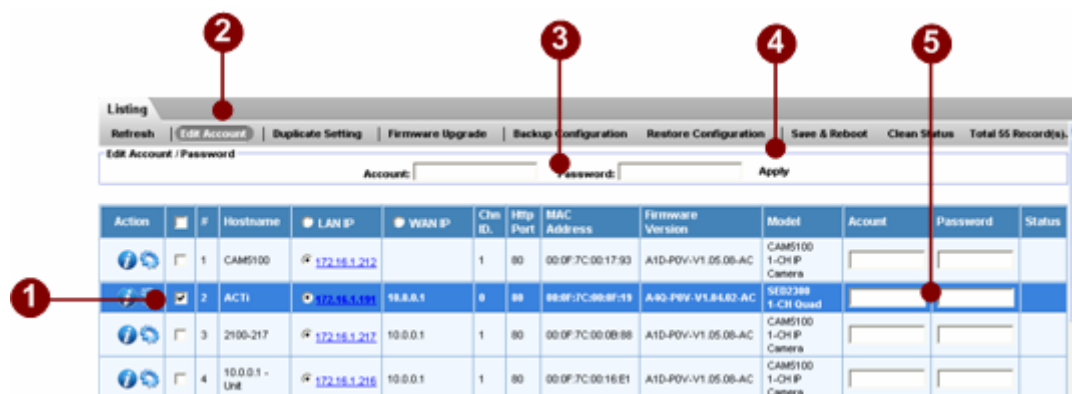


Figure 6. The Page of Edit Account

**Checkbox** : click checkbox.

**Edit Account**:

**Account and Password** : type account and password.

**Apply**: Click apply button

**Account and Password**: Auto fill account and password.

## Edit

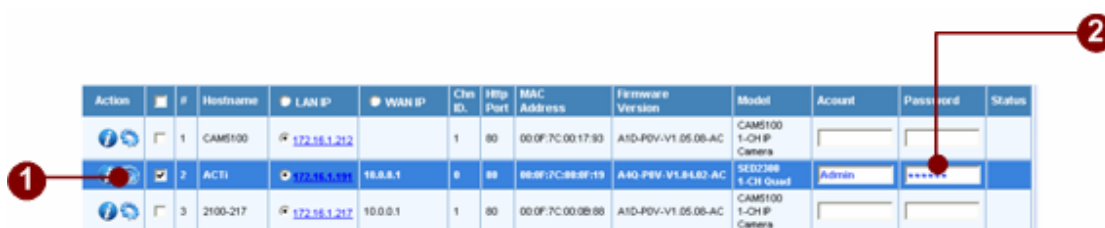


Figure 7. Edit Account

1. **Account&Password** : type account and password
2. **Action** : click on this to change the Hostname, IP Address and port number.

# Edit Details

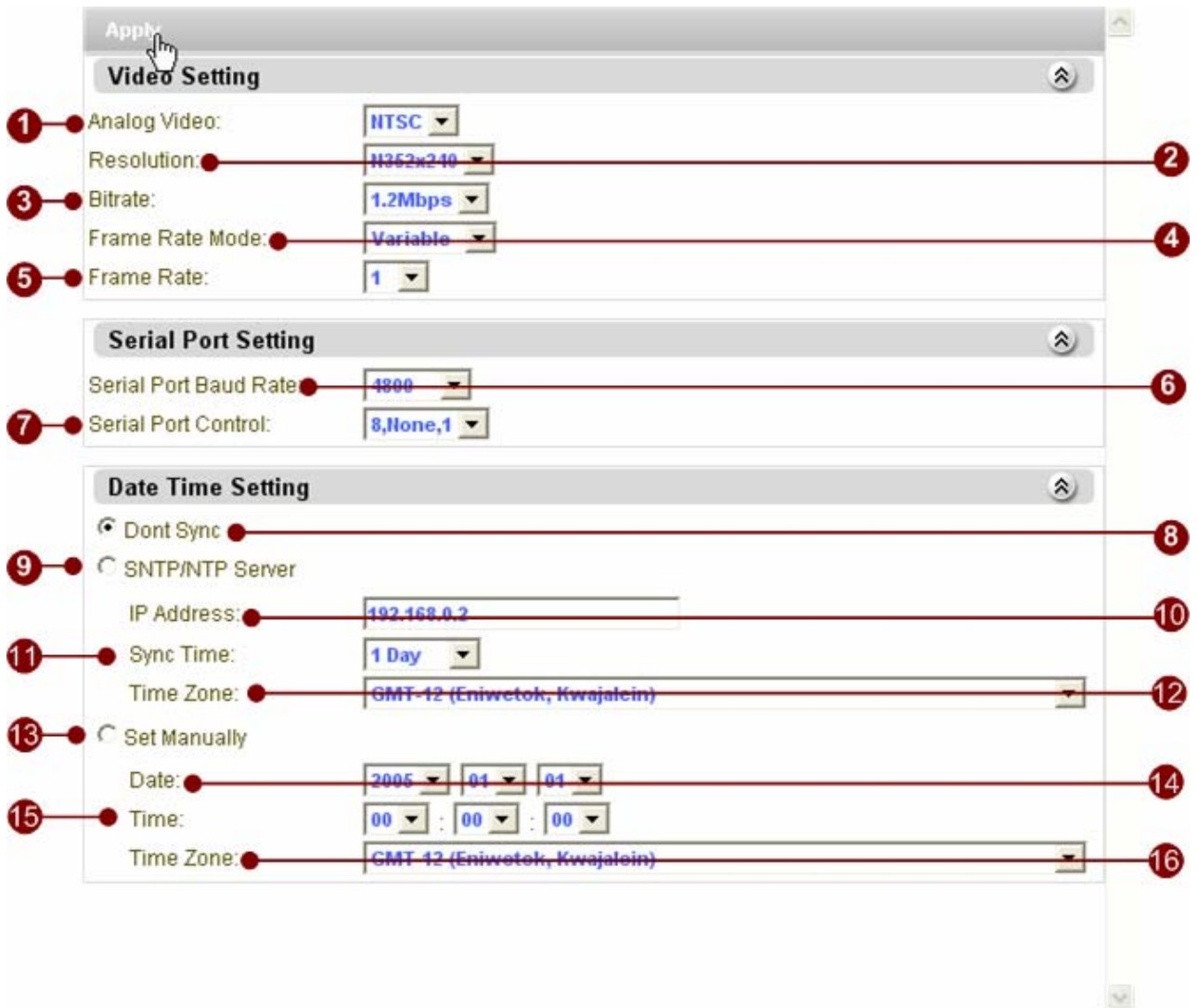


Figure 8. Edit Details

1. **Analog Video: NTSC, PAL video standard**
2. **Resolution: D1, CIF, QCIF**
3. **Bitrate: 3Mbps, 2.5Mbps, 2Mbps, 1.5Mbps, 1.2Mbps, 1Mbps, 750Kbps, 500Kbps, 384Kbps, 256Kbps, 128Kbps, 64Kbps, 28Kbps**
4. **Frame Rate Mode; Variable, Constant Frame Rate**
5. **Frame Rate: Frame rate selection**
6. **Serial Port Baud Rate: 19200, 9600, 4800, 2400, 1200**
7. **Serial Port Control: N81, E81, N80**
8. **Don't sync time to server**
9. **Use SNTP/NTP Server to sync time**

10. **NTP Server IP address**
11. **Sync time interval**
12. **Time zone selection**
13. **Set date time manually**
14. **Set date**
15. **Set time**
16. **Time zone selection**
17. **Click “Apply” to apply setting to the IP devices selected**

# 3

## Firmware Upgrade User Interface

### Understating the User Interface

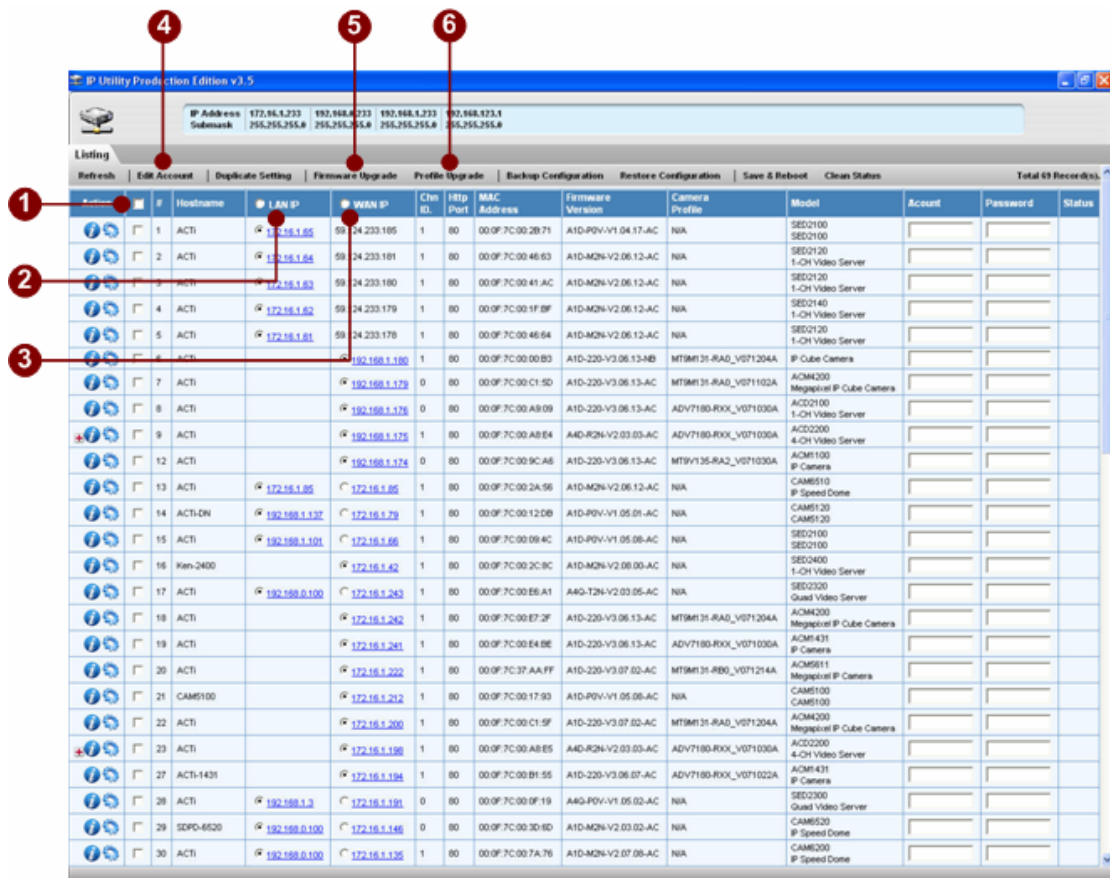


Figure 9. Streaming Explorer User Interface

- Select All:** Select all or Cancel all selected connections of listing.
- Select all LAN IP:** All connections are connected by LAN IP .
- Select all WAN IP:** All connections are connected by WAN IP
- Edit Account:** Display a page to set account and password, and fill setting of selected connections with those data be used to login servers.
- Firmware Upgrade:** Display the page of firmware upgrade setting.
- Profile Upgrade:** Upgrade camera profile to selected camera automatically.

# The Page of Firmware Upgrade Setting

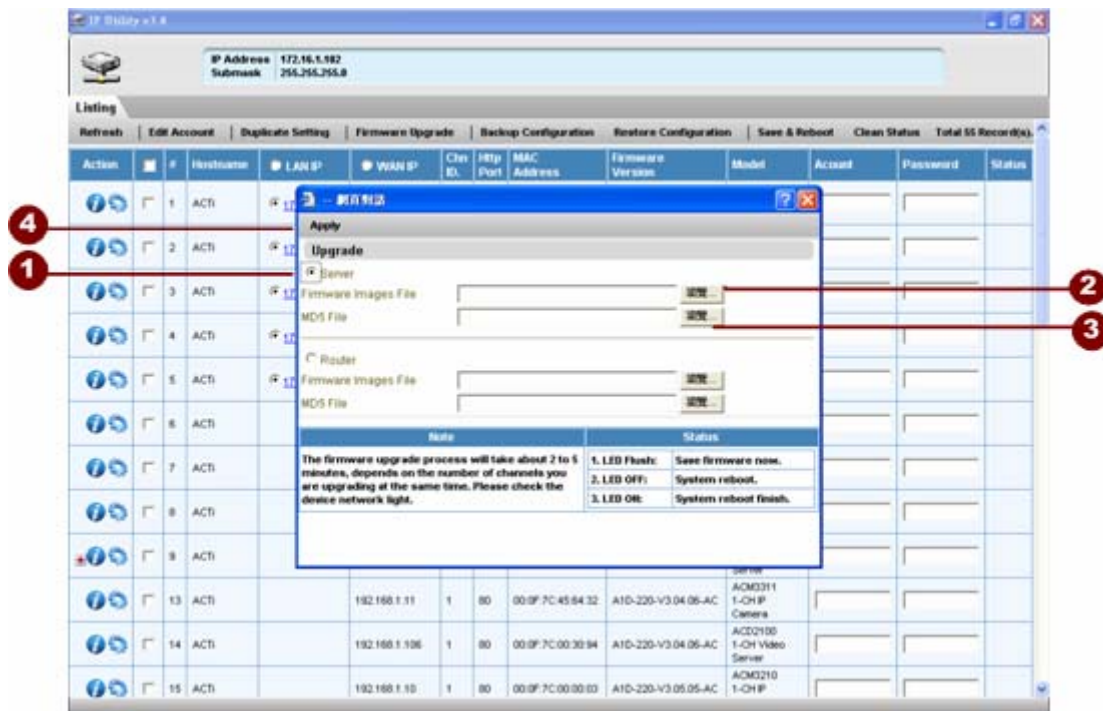


Figure 10. The Page of Firmware Upgrade Setting

1. **Check:** Select the firmware type want to upgrade..
2. **Firmware:** Click “Browse” button to select the firmware you will upgrade.
3. **MD5:** Click “Browse” button to select the MD5 you will upgrade.
4. **Apply:** Click “Apply” button to upgrade firmware and MD5 of this server, after several minutes the server will reboot.



**NOTE:** Before upgrading the firmware and MD5 of the server, make sure you choose the correct version of this server .

# 4 IP Utility Backup and Restore

## Backup

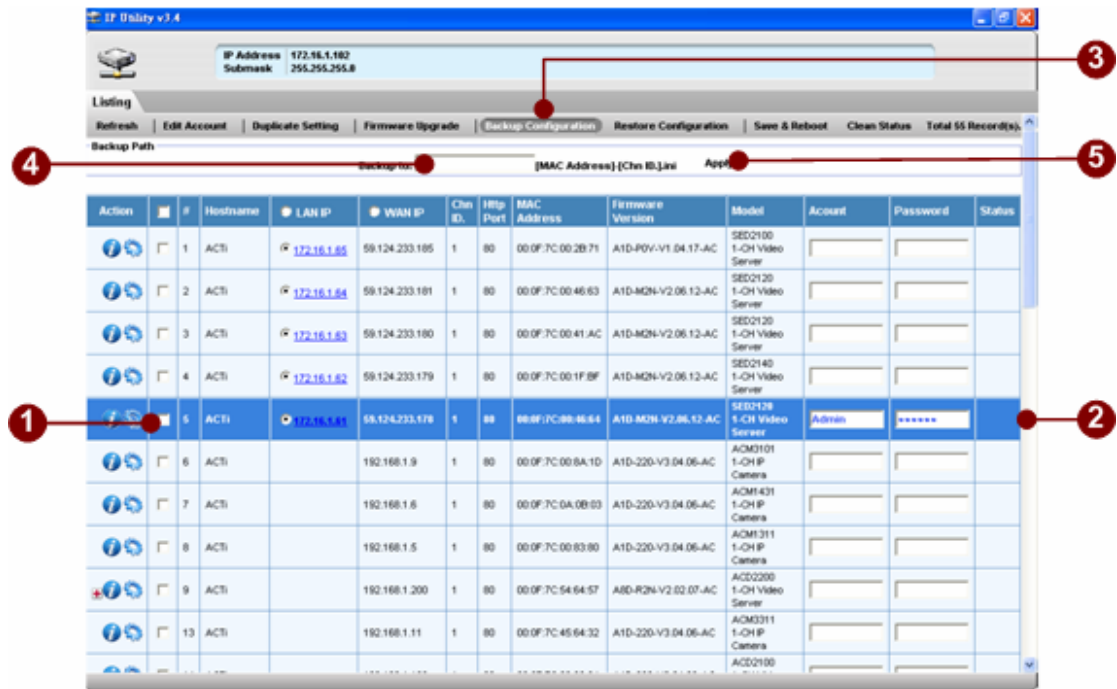


Figure 11. Backup

1. Selecting all the server that you will backup their setting.
2. Enter the authorized account and password by this server.
3. Click “Backup” button to backup the setting of selected servers.
4. Fill the Path in the Textfield.
5. Click “Apply”

# Restore

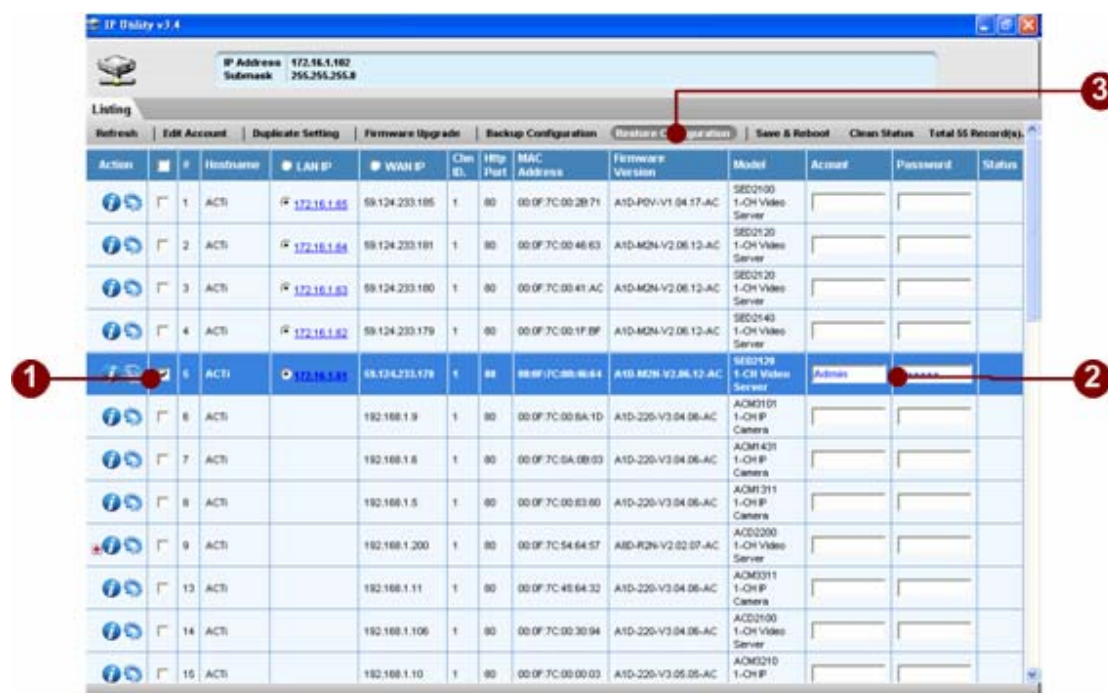


Figure 12. Restore

1. Selecting the server that your will restore its setting.
2. Enter the authorized account and password by this server.
3. Click "Restore" button to display the Page of Restore Setting.



Figure 13. Choose the backup file

1. Choose a Restore File
2. Click "Apply"